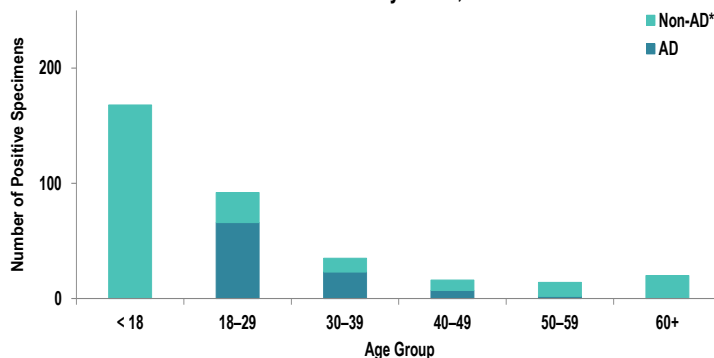


SUMMARY

Influenza activity in the Army population continues to decrease. However, flu A activity increased among installations in Medical Readiness Command-East. Overall, respiratory syncytial virus (RSV) activity is low and continues to decrease. Two influenza-associated hospitalizations were reported during week 13; both cases were non-AD individuals. The season total thus far is 162 hospitalizations compared to an average of 192 hospitalizations in the same time period during the 2018-2023 seasons. Nationwide, influenza activity remains elevated but continues to decrease, with 7.7% of specimens tested by clinical laboratories being positive for influenza A or B, according to the Centers for Disease Control and Prevention (CDC).

DEMOGRAPHICS

Positive Respiratory Specimen Results from Army MTFs by Age Group and Beneficiary Status, Week 13



AD: Ninety-eight positive respiratory specimens were collected from active duty (AD) service members (SMs) during Week 13; 67.3% (n=66) of the positive specimens were collected from SMs 18 – 29 years of age.

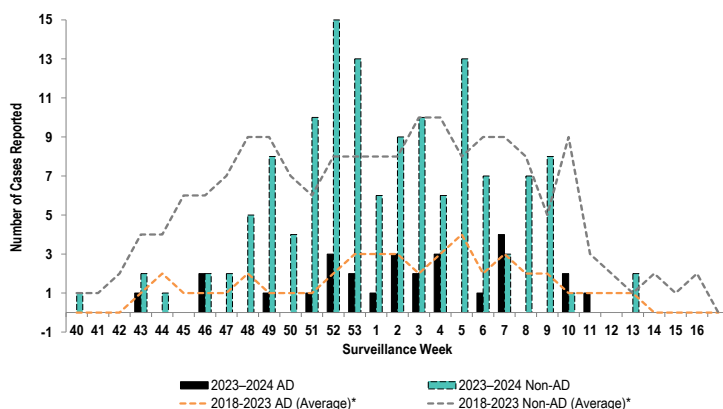
Non-AD: Two hundred and forty-seven positive respiratory specimens were collected from non-AD individuals during Week 13; 68.0% (n=168) of the positive specimens were collected from individuals under 18 years of age and 10.5% (n=26) from individuals who are 18 – 29 years old.

*Non-AD=All individuals that are not active duty service members.

The age and beneficiary status of some cases were not available. Therefore, all calculations involving these variables were conducted using only available data. Differences in total results, and age- and beneficiary status-specific results may be noted throughout the report.

INFLUENZA-ASSOCIATED HOSPITALIZATIONS

Army Influenza-Associated Hospitalizations Reported in DRSi by Onset Week



Two influenza-associated hospitalizations with an onset date in Week 13 were reported to the Disease Reporting System internet (DRSi). The season total thus far is 162 hospitalizations. The Week 13 average during the 2018 – 2023 seasons was 1 hospitalizations (with an average of 192 hospitalizations reported from the start of the season through Week 13).

The DRSi does not capture cases older than 65 years old for influenza-associated hospitalizations.

*Data from the 2020–2021 and 2021–2022 influenza seasons are not included in comparison calculations due to the unusually low incidence of influenza.

Data are preliminary and subject to change.

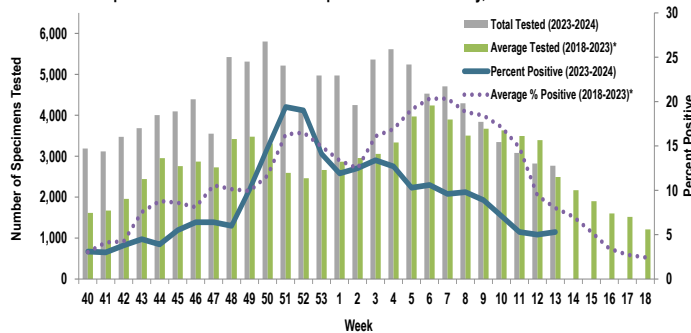
Disclaimer: The mention of any non-federal entity and/or its products is for informational purposes only, and not to be construed or interpreted, in any manner, as federal endorsement of that non-federal entity or its products.

Questions?
Email DCPH-A DEP

INFLUENZA A ACTIVITY - ARMY

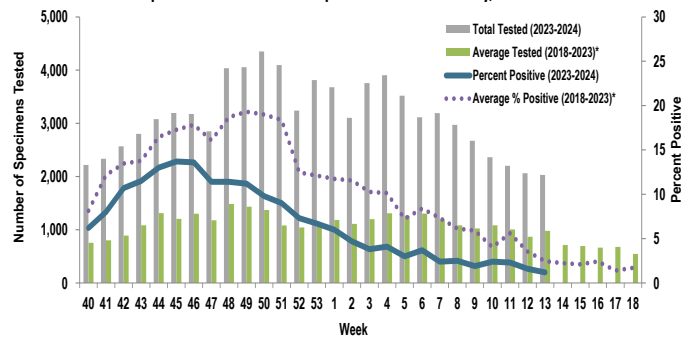
RSV ACTIVITY - ARMY

Proportion of Positive Influenza A Specimens for U.S. Army, 2023-2024



Of the 2,769 specimens tested for influenza A during Week 13, 5.3% (n=148) were positive. Influenza A activity is continuing to decrease.

Proportion of Positive RSV Specimens for U.S. Army, 2023-2024



Of the 2,029 specimens tested for RSV during Week 13, 1.2% (n=24) were positive. RSV activity is low and continues to decrease.

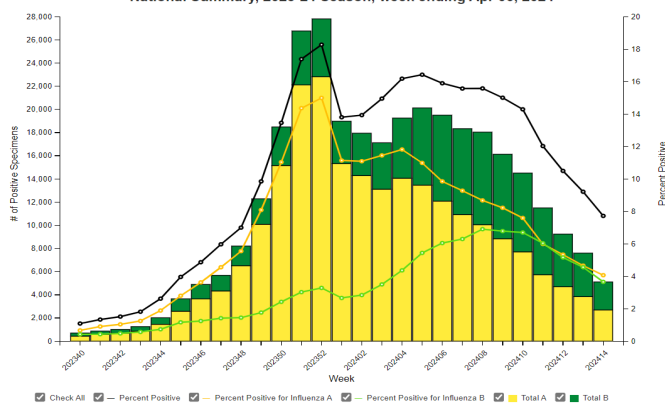
*Data from the 2020-2021 and 2021-2022 influenza seasons are not included in comparison calculations due to the unusually low incidence of influenza.

	Week 10	Week 11	Week 12	Week 13	Season Total	
Army MTF Laboratory Results, 2023-24	Adenovirus	15	24	9	13	351
	Enterovirus	30	50	44	51	1,211
	Influenza A	239	162	142	148	11,077
	Influenza B	190	136	112	74	4,800
	Parainfluenza	32	23	31	36	406
	RSV	56	51	32	24	5,969
	Negative	2,856	2,724	2,533	2,484	93,023
	Total	3,418	3,170	2,903	2,830	116,837

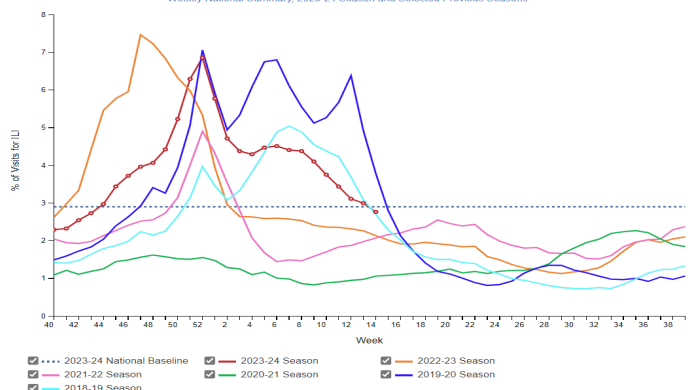
Of the 2,830 specimens tested during Week 13, 12.2% (n=346) were positive for any type of respiratory illness. Influenza A accounted for 42.8% (n=148) of the positive results, influenza B accounted for 21.4% (n=74), enterovirus accounted for 14.7% (n=51), parainfluenza accounted for 10.4% (n=36), RSV accounted for 6.9% (n=24), and adenovirus accounted for 3.8% (n=13). Additionally, the reported number of specimens tested decreased 2.5% from Week 12 to Week 13. Significantly more tests for influenza have been conducted this season compared to past seasons; 115,177 specimens have been tested for influenza A so far this season compared to the average of 81,421 specimens during the same time period in 2018-2023*.

INFLUENZA-LIKE ILLNESS (ILI) ACTIVITY - UNITED STATES

Influenza Positive Tests Reported to CDC by Clinical Laboratories, National Summary, 2023-24 Season, week ending Apr 06, 2024



Percentage of Outpatient Visits for Respiratory Illness Reported by The U.S. Outpatient Influenza-like Illness Surveillance Network (ILI-Net), Weekly National Summary, 2023-24 Season and Selected Previous Seasons

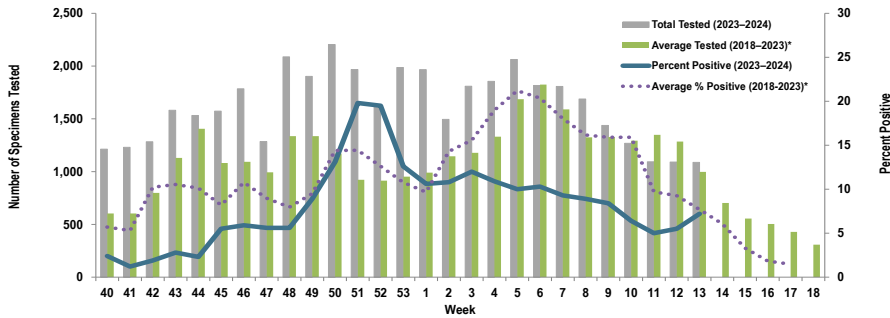


Nationwide in Week 13 (CDC's Week 14), incident ILI activity was 2.8%; this is below the national baseline of 2.9%. Additionally, a total of 66,199 specimens were tested for influenza by select clinical laboratories and submitted to the CDC; 5,111 (7.7%) were positive. Influenza A accounted for 52.7% (n=2,692) of the total positive specimens.

Locations providing Week 13 laboratory data as of 10 April 2024: Camp Zama, Carlisle Barracks, Ft. Belvoir, Ft. Bliss, Ft. Campbell, Ft. Cavazos, Ft. Carson, Ft. Drum, Ft. Eisenhower, Ft. Eustis, Ft. Gregg-Adams, Ft. Huachuca, Ft. Irwin, Ft. Jackson, Ft. Johnson, Ft. Knox, Ft. Leavenworth, Ft. Leonard Wood, Ft. Lewis, Ft. Liberty, Ft. Meade, Ft. Moore, Ft. Novosel, Ft. Riley, Ft. Sam Houston, Ft. Sill, Ft. Stewart, Ft. Wainwright, Korea, Landstuhl Regional Medical Center, Redstone Arsenal, Tripler Army Medical Center, the U.S. Military Academy at West Point, and Walter Reed National Military Medical Center.

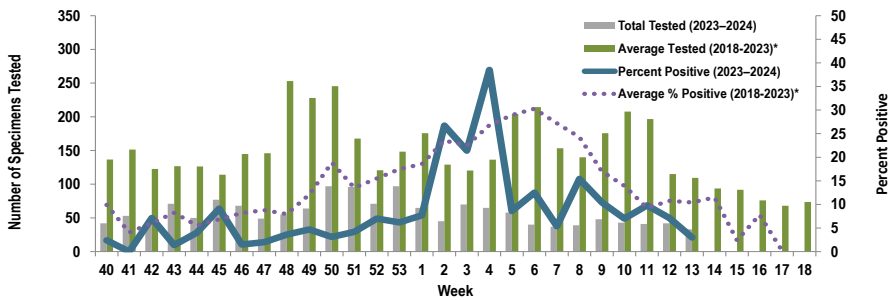
Proportion of Influenza A Positive Specimens by Week and Medical Readiness Command, 2023–2024 as Compared to 2018–2023*

Medical Readiness Command - East



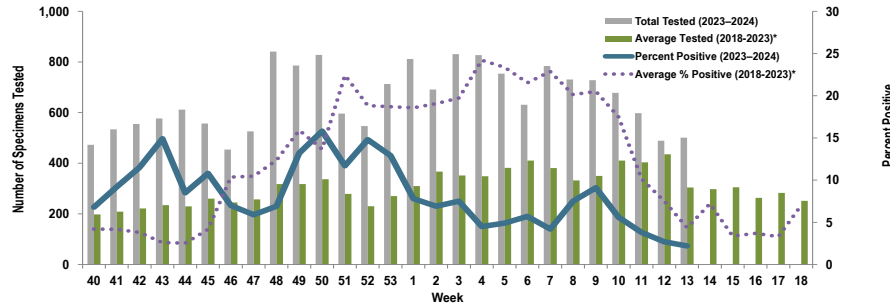
Week 13			
Age Group	AD	Non-AD	Season Total
< 18	0	16	1,293
18–29	34	3	893
30–39	7	2	604
40–49	2	1	396
50–59	1	4	304
60+	0	8	351
Total	44	34	3,841

Medical Readiness Command - Europe (Landstuhl Regional Medical Center)



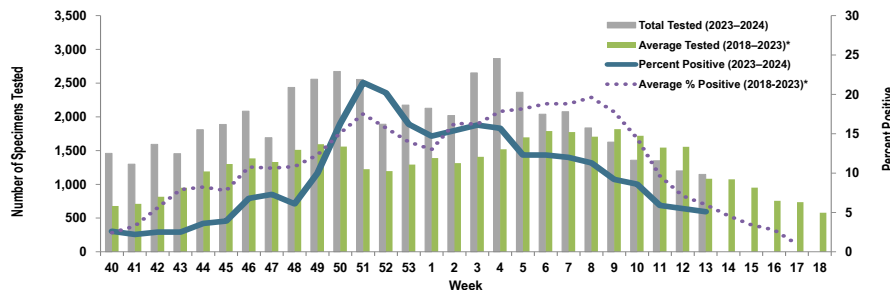
Week 13			
Age Group	AD	Non-AD	Season Total
< 18	0	0	46
18–29	0	0	24
30–39	0	0	25
40–49	0	0	17
50–59	0	0	11
60+	0	1	7
Total	0	1	130

Medical Readiness Command - Pacific



Week 13			
Age Group	AD	Non-AD	Season Total
< 18	0	0	382
18–29	3	3	526
30–39	2	0	268
40–49	0	0	108
50–59	1	1	63
60+	0	1	116
Total	6	5	1,463

Medical Readiness Command - West



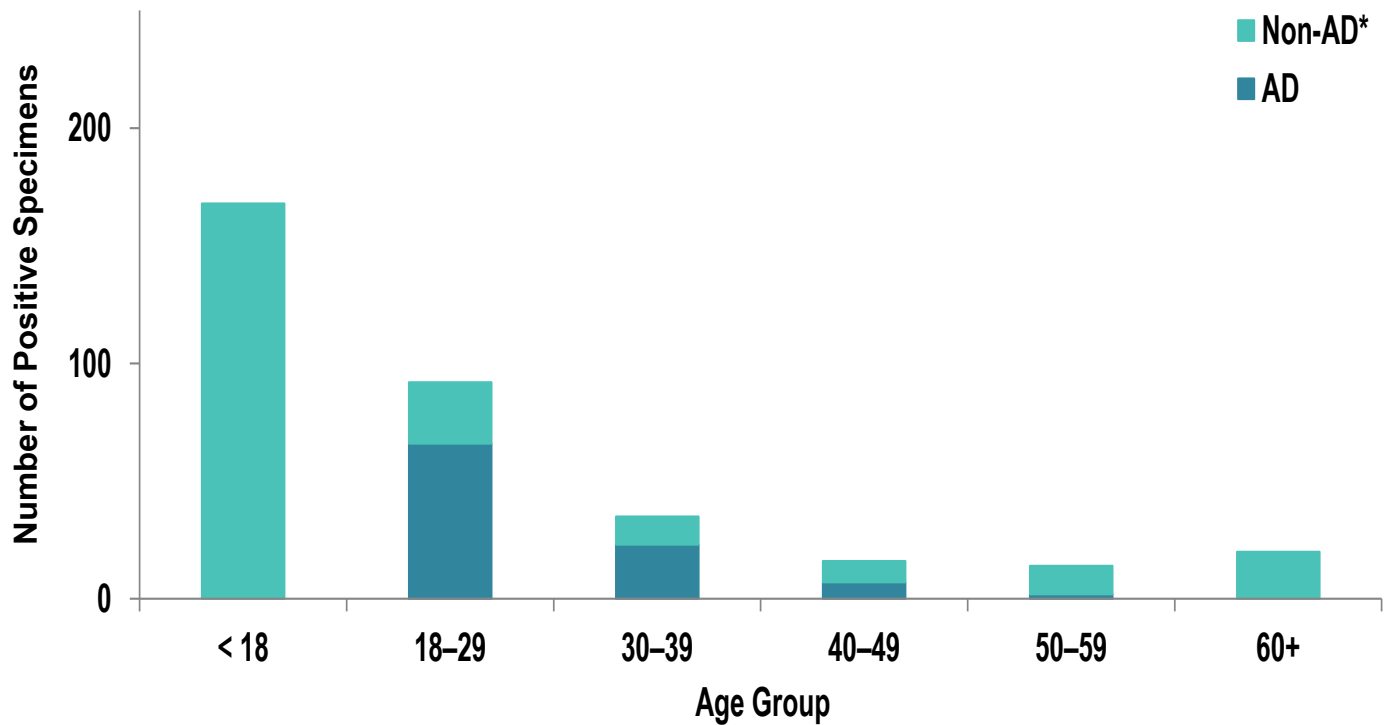
Week 13			
Age Group	AD	Non-AD	Season Total
< 18	0	26	1,960
18–29	12	5	1,452
30–39	3	4	899
40–49	1	3	510
50–59	0	4	378
60+	0	0	439
Total	16	42	5,638

*2018–2019, 2019–2020, and 2022–2023 influenza seasons. Data from the 2020–2021 and 2021–2022 influenza seasons are not included in comparison calculations due to the unusually low incidence of influenza.

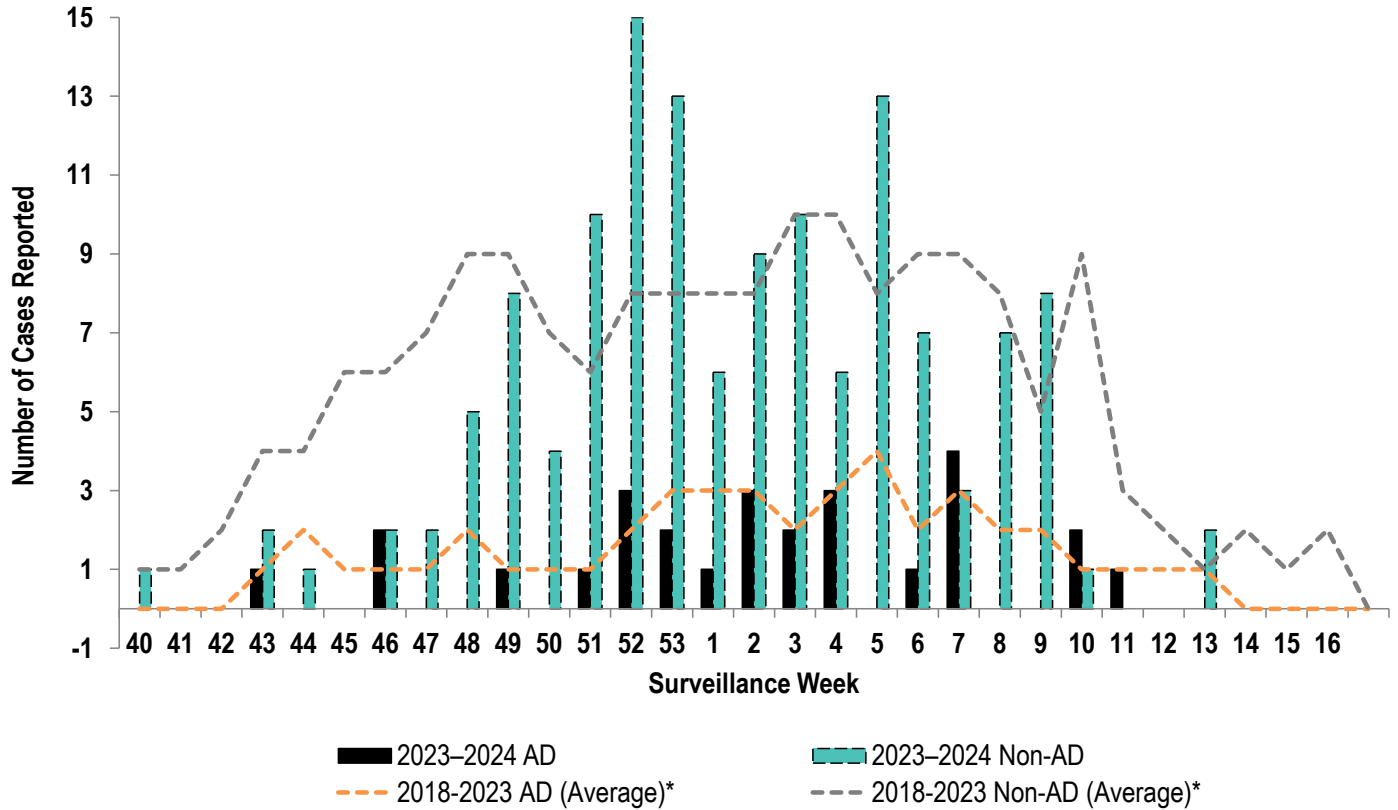
Number of Positive Influenza A Specimens by Region and Duty Status

Region	Week 10		Week 11		Week 12		Week 13	
	AD	Non-AD	AD	Non-AD	AD	Non-AD	AD	Non-AD
MRC-East	31	50	20	35	20	40	44	34
MRC-Europe	0	3	1	3	0	3	0	1
MRC-Pacific	18	20	7	16	6	7	6	5
MRC-West	32	85	32	48	20	46	16	42

Positive Respiratory Specimen Results from Army MTFs by Age Group and Beneficiary Status, Week 13

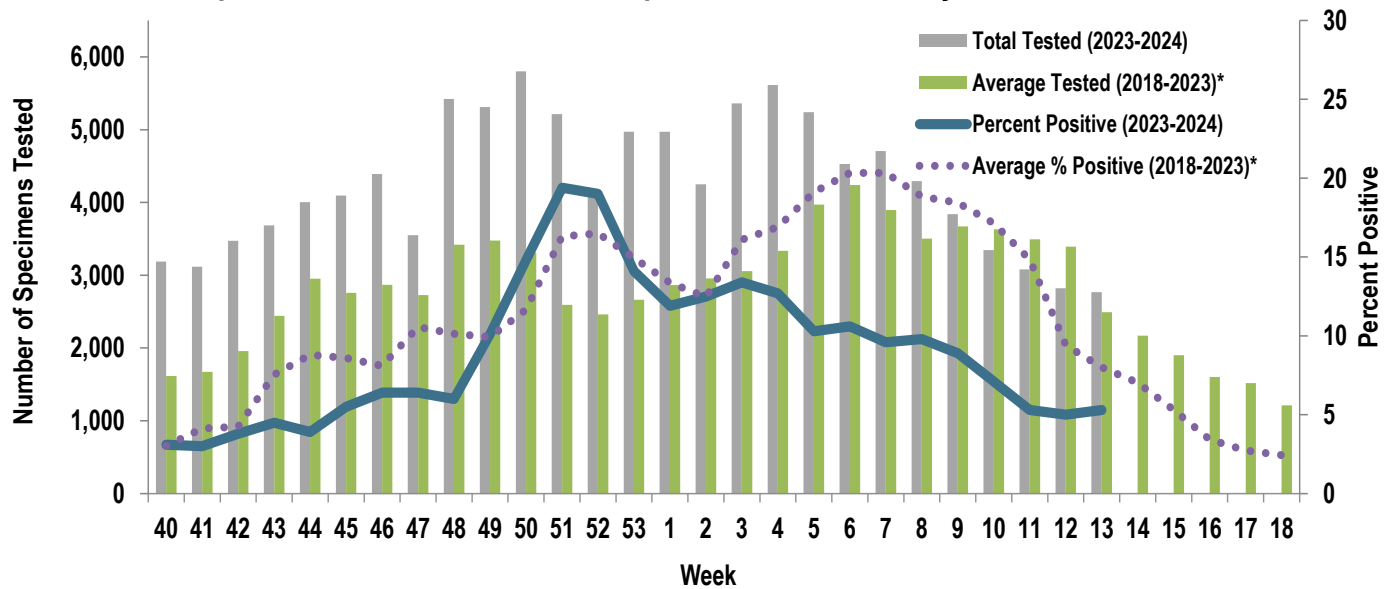


Army Influenza-Associated Hospitalizations Reported in DRSi by Onset Week



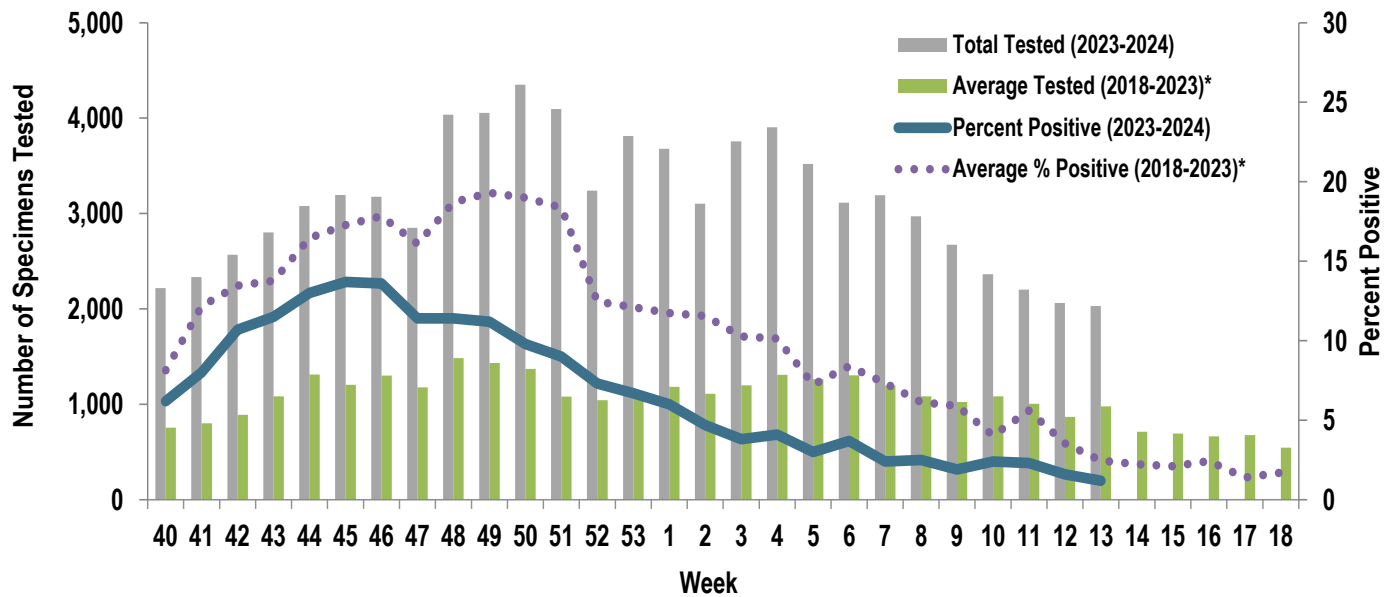
*2018-2019, 2019-2020, and 2022-2023 influenza seasons. Data from the 2020-2021 and 2021-2022 influenza seasons are not included in comparison calculations due to the unusually low incidence of influenza.

Proportion of Positive Influenza A Specimens for U.S. Army, 2023-2024



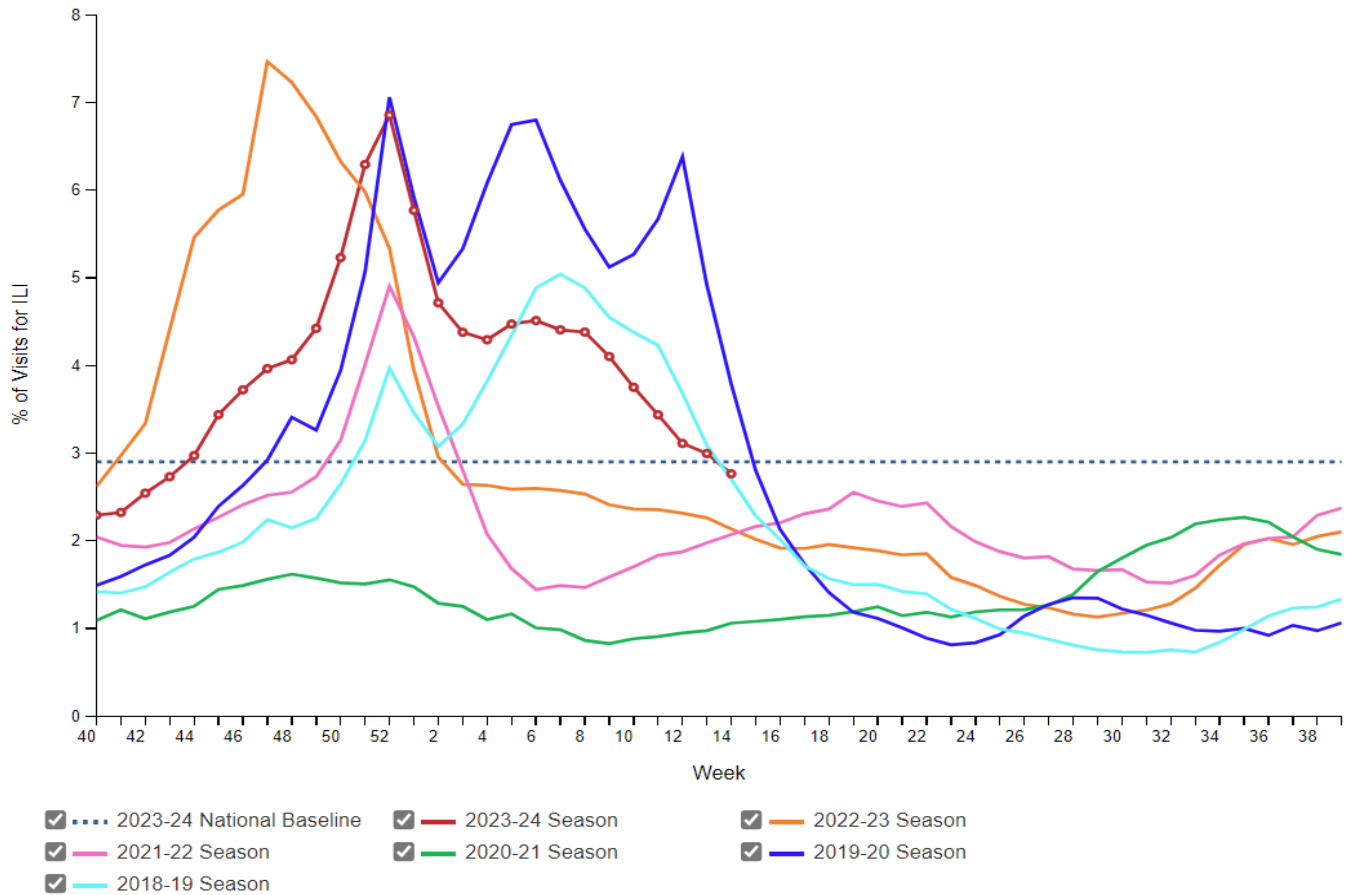
*2018–2019, 2019–2020, and 2022–2023 influenza seasons. Data from the 2020–2021 and 2021–2022 influenza seasons are not included in comparison calculations due to the unusually low incidence of influenza.

Proportion of Positive RSV Specimens for U.S. Army, 2023-2024



*2018–2019, 2019–2020, and 2022–2023 influenza seasons. Data from the 2020–2021 and 2021–2022 influenza seasons are not included in comparison calculations due to the unusually low incidence of influenza.

Percentage of Outpatient Visits for Respiratory Illness Reported by The U.S. Outpatient Influenza-like Illness Surveillance Network (ILINet), Weekly National Summary, 2023-24 Season and Selected Previous Seasons



Influenza Positive Tests Reported to CDC by Clinical Laboratories, National Summary, 2023-24 Season, week ending Apr 06, 2024

